

KUT650 Ultrasonic Flaw Detector



TECHNICAL DATA

Thickness Measuring Range	0~10000mm
Scanned Area	0~10000mm
Frequency Range	0.5~15MHz
Sound Speed	1000~15000m/s
Gain	0~120dB
Measurement Mode	Single, dual, thru
D-Delay	D-Delay -20~+3400μs
P-Delay	0~99.99μs
Resolution	0.1mm(2.5mm~100mm) 1mm(>100mm)
Power	Li-battery (working time>10 hours)
Display	LED true color
Humidity	20%~90%RH
Temperature	-20°C~70°C
Size	238x155x46mm
Weight	1kg

MAIN FEATURE


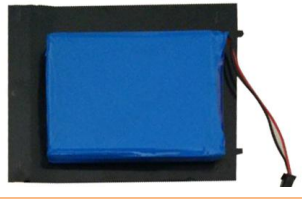

- *KUT 650 could measure item's thickness, measuring range:0-10000mm
- *Automated display precise flaw location(Depth d, level p,distance s,amplitude,sz dB,φ), utomated to switch;
- *Automated calibration of transducer Zero-point, angles, front edge and material velocity;
- *Convenient to make and use DAC/TCG and AVG to evaluate the echo, the curve can be modified and compensated;
- *6dB DAC functions, standards of test for DAC is saved;
- *Gate and DAC alarm, display freeze;
- *B scan, AWS D1.1;
- *Max 500 independence setup, any criterion can be input freely, can work in the scene without test block;

- *Big memory Max 1000 A graph, unlimited of video time, automated make video of test process and play;
- *Automated gain and gain scan;
- *Peak hold and peak memory;
- *Powerful PC software,reports can be export to excel;
- *The embeded software can be online updated;
- *Automated echo degree;
- *Big memory Max 1000 A graph;
- *Electronic clock calendar, lock and unlock function of system parameters;
- *Two gates setting and alarm indication.

STANDARD DELIVERY

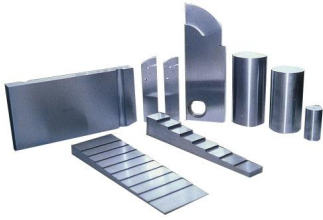
ITEM	QTY
KUT650 Host	1 PC
Straight Probe 10mm 4MHz	1 PC
Angle Probe 8x9 60°4MHz	1 PC
Probe Connecting Cable	2 PCs
9V Power Adaptor & Cable	1 PC
PC Software	1 PC
Communication Cable	1 PC
Calibration Certificate	1 PC
User Manual	1 PC
Instrument Case	1 PC
Warranty	2 Years

RELATED OPTIONAL ITEMS

	<p>Standard Straight transducer Standard frequency: 4M.</p> <p>Standard Angular transducer Standard frequency: 4M Angle: 45°, 60°, 70°.</p>
	<p>Li battery pack 7.4V 4800mA (Non-aviation transport separately)</p>
	<p>Connecting cable for flaw detector and transducer.</p>



東莞市宏拓儀器有限公司
DongGuan HongTuo Instruments Co., Ltd.
东莞市道滘镇大岭丫村第三工业区新丫路2号
No2.,XinYa Road,The Third Industrial Park,
DaLingYa Village,DaoJiao,DongGuan,China.
Tel: +86 0769 23181250 / 23181251 / 23181252
Fax:+86 0769 23181253



Various calibration blocks and custom made probes, quotation according to customer's requirements, welcome to inquire.

